

MURPHY

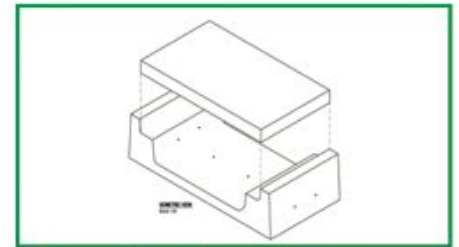
Electricity Alliance



Murphy Group, Penwortham 275/400Kv Substation.



- Precast Concrete Cable Ducts, 1300mm wide x 300mm deep c/w heavy duty concrete lids.
- Full design package by Carlow Precast
- Short delivery and installation time frame
- Installation by Client



Early involvement in projects is essential to achieve SAVINGS at construction stages

